



GHANA STATISTICAL SERVICE (GSS)
Statistics for Development and Progress

Statistical Bulletin

PRODUCER PRICE INDEX (PPI)
November, 2014

Ghana Statistical Service (GSS)

Statistical Bulletin

PRODUCER PRICE INDEX (PPI)
NOVEMBER, 2014

Date: December 24, 2014

Producer Price Index (PPI)

November 2014

CONTENTS

HIGHLIGHTS FOR NOVEMBER 2014	2
Table 1: Producer Price Index for November 2013 - November 2014	4
Table 2: Producer Price Index (Sep.2006=100) by sectors for November 2013 - November 2014	5
Table 3: Producer Price Index: Yearly Change Rates by Sector for November 2013 - November 2014 (%)	6
Table 4: Producer Price Index: Monthly Change Rates by Sector for November 2013 - November 2014 (%)	7
Table 5: Mining And Quarrying: Producer Price Index (Sept 2006=100) November 2013 - November 2014	8
Table 6: Mining and Quarrying: Yearly Change Rates for November 2013 - November 2014(%)	9
Table 8: Manufacturing Producer Price Index (Sept 2006=100) for November 2013 - November 2014	11
Table 9: Manufacturing: Yearly Change Rates for November 2013 - November 2014 (%)	17
Table 10: Manufacturing: Monthly Change Rates for November 2013 - November 2014 (%)	23
Table 11: Utilities: Producer Price Index (Sept 2006=100) for November 2013 - November 2014	28
Table 12: Utilities: Yearly Change Rates for November 2013 - November 2014 (%)	29
Table 13: Utilities: Monthly Change Rates for November 2013 - November 2014 (%)	30

HIGHLIGHTS FOR OCTOBER 2014

Producer Price Inflation Rate decreased to 37.5% in November 2014

The Producer Price Index (PPI) measures the average change over time in the prices received by domestic producers for the production of their goods and services. The PPI for Ghana reports the producer price indices with reference to September 2006, the base period.

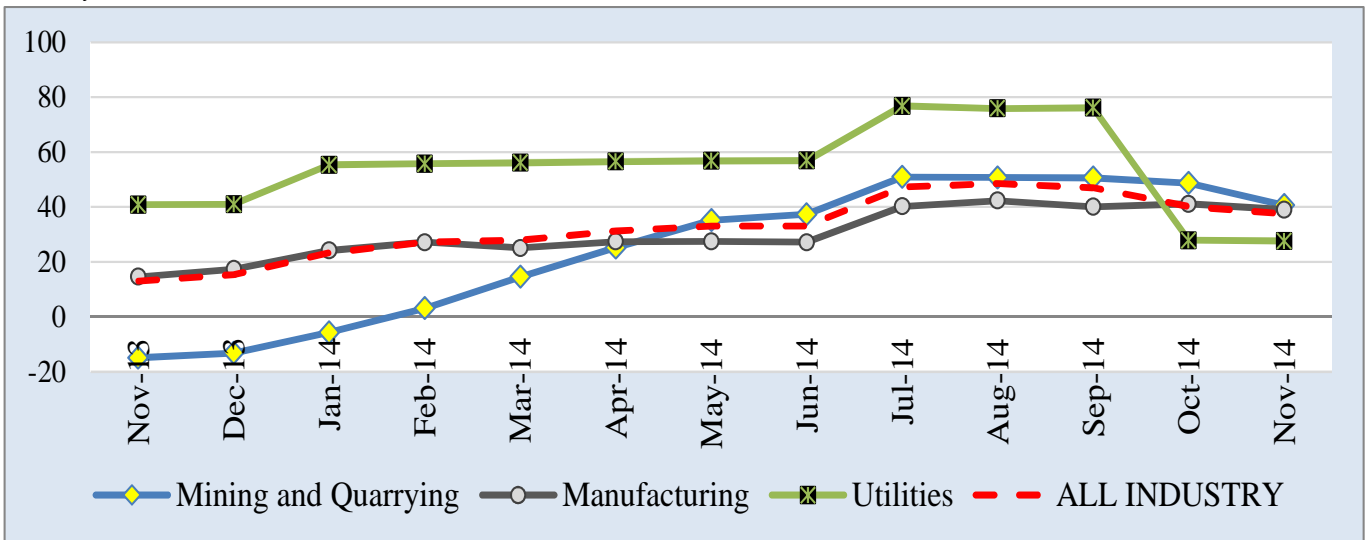
This release shows the producer price changes since September 2006, as well as the annual (year-on-year) and monthly inflation rates, for all industry and three major sub-sectors of industry (Mining and Quarrying, Manufacturing, and Utilities) for the last twelve months. The figures for the month of November 2014 are provisional, and are subject to revision when additional data become available. All other indicators are final.

The Producer Price Inflation rate for November 2014 was 37.5 percent. This rate indicates that, between November 2013 and November 2014 (year-on-year), the PPI increased by 37.5 percent, representing a 2.6 percentage point decrease in producer inflation relative to the rate recorded in October 2014 (40.1%). The month-on-month change in the producer price index between October 2014 and November 2014 was -1.0 percent

In November 2014, the producer price inflation in the Mining and Quarrying sub-sector decreased by 8.1 percentage points over the October 2014 rate of 48.7 percent, to record 40.6 percent in November 2014. Manufacturing, which constitutes more than two-thirds of total industry, also decreased by 2.1 percentage points to record 39.0 percent. The Utilities sub-sector recorded an inflation rate of 27.6 percent in November 2014, suggesting a 0.2 percentage point decrease over the October 2014 rate of 27.8 percent.

During the month of November 2014, three out of the sixteen major groups in the manufacturing sub-sector recorded inflation rates higher than the sector average of 39.0 percent (Fig. 2). Manufacture of other non-metallic mineral products recorded the highest inflation rate of 69.7 percent whilst producer prices in the manufacture of machinery and equipment n.e.c recorded the lowest producer price inflation rate.

PPI by Sectors; November 2013 to November 2014



Manufacture of coke, refined petroleum products etc: Annual rate was 63.7 percent for October 2014, as compare to 61.1 percent in November 2014.

Manufacture of other non-metallic mineral product: Annual rate was 70.8 percent for October 2014, as compare to 69.7 percent in November 2014.

Manufacture of motor vehicles, trailers and semi-trailers: Annual rate was 38.6 percent in November 2014 as compared to 40.2 percent last month.

Electricity and Water Supply: Annual rate is 27.6 percent in November 2014; as compare to 27.8 percent in October 2014.

More detailed time series data is posted on the GSS website [www.statsghana.gov.gh].

The next release date is 28th January, 2015

Table 1: Producer Price Index for November 2013 - November 2014

Year / Month	Index level	Monthly	Yearly
	Sept 2006=100	Change Rate (%)	
2009 Average	172.5	2.1	15.4
2010 Average	204.7	1.4	18.8
2011 Average	242.6	1.1	18.7
2012 Average	284.2	1.3	17.1
November-13	335.1	0.9	13.0
December-13	340.4	1.6	15.3
January-14	364.6	7.1	23.3
February-14	375.0	2.9	27.1
March-14	386.7	3.1	27.8
April-14	396.6	2.6	31.3
May-14	401.7	1.3	32.2
June-14	404.5	0.7	33.1
July-14	445.2	10.0	47.2
August-14	453.7	1.9	48.6
September-14	459.4	1.3	47.0
October-14	465.2	1.3	40.1
November-14	p 460.7	p -1.0	p 37.5

p: provisional

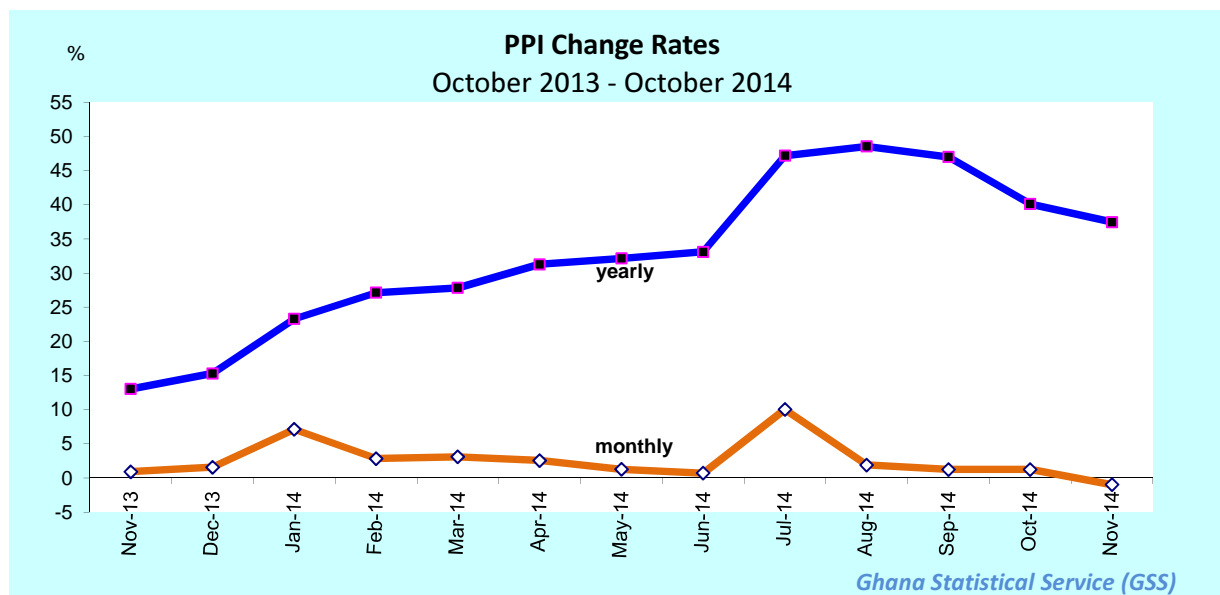


Table 2: Producer Price Index (Sep.2006=100) by sectors for November 2013 - November 2014

Year / Month	Mining and Quarrying	Manufacturing	Utilities	ALL INDUSTRY
	ISIC C	D	E	C+D+E
	weight 13.97	69.75	16.28	100.00
2009 average	282.2	156.6	159.4	172.5
2010 average	349.7	176.3	226.0	204.7
2011 average	467.0	200.5	281.3	242.6
2012 average	584.2	237.7	301.9	284.2
November-2013	537.0	284.3	426.8	335.1
December-2013	531.9	291.4	427.3	340.4
January-2014	582.0	308.6	470.9	364.6
February-2014	627.7	315.9	472.1	375.0
March-2014	681.0	324.1	473.4	386.7
April-2014	707.8	333.2	474.8	396.6
May-2014	731.7	336.7	475.8	401.7
June-2014	737.1	339.6	476.5	404.5
July-2014	771.6	375.8	536.8	445.2
August-2014	781.4	385.8	534.1	453.7
September-2014	797.6	390.9	535.1	459.4
October-2014	788.8	396.8	544.6	465.2
November-2014	p 755.0	p 395.1	p 544.6	p 460.7

p: provisional

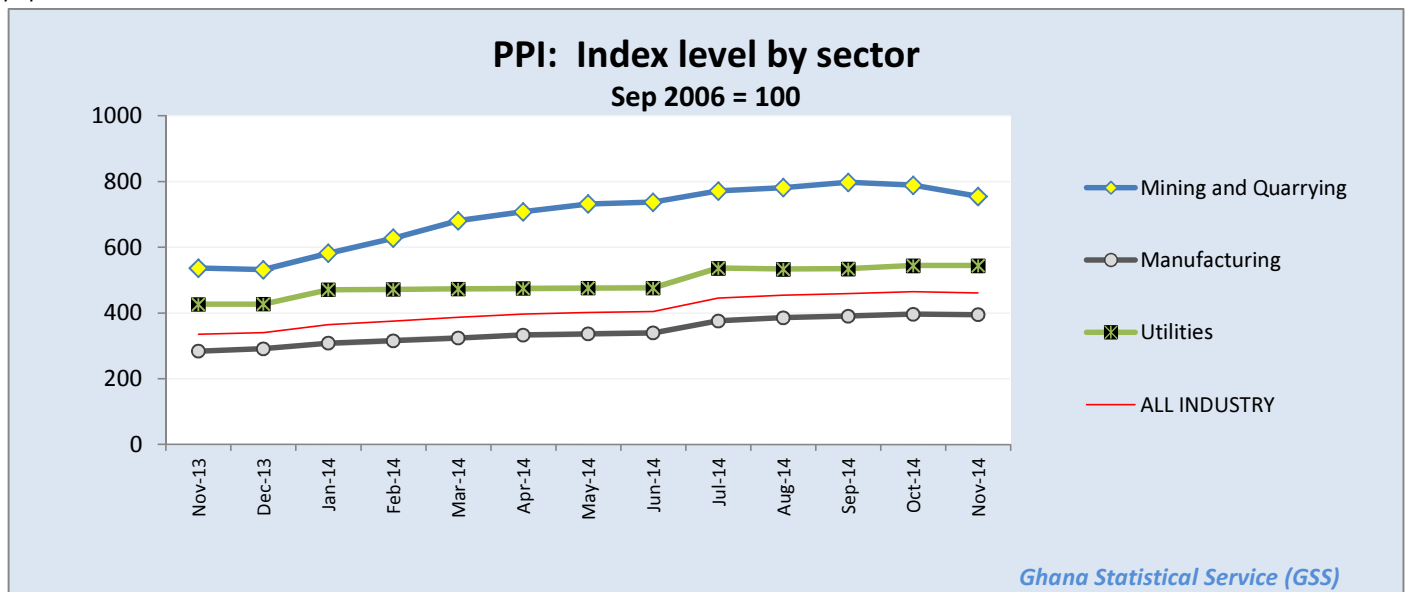


Table 3: Producer Price Index: Yearly Change Rates by Sector for November 2013 - November 2014 (%)

Year / Month	Mining and Quarrying	Manufacturing	Utilities	ALL INDUSTRY
<i>ISIC</i>	<i>C</i>	<i>D</i>	<i>E</i>	<i>C+D+E</i>
<i>weight</i>	13.97	69.75	16.28	100.00
2009 average	47.3	12.7	1.4	15.4
2010 average	24.3	13.3	41.7	18.8
2011 average	33.7	13.7	32.7	18.7
2012 average	25.5	18.5	7.4	17.1
November-2013	-14.9	14.5	40.8	13.0
December-2013	-13.2	17.4	41.0	15.3
January-2014	-5.8	24.2	55.3	23.3
February-2014	3.1	27.2	55.7	27.1
March-2014	14.5	25.1	56.1	27.8
April-2014	25.2	27.4	56.5	31.3
May-2014	35.2	27.5	56.8	33.0
June-2014	37.3	27.1	56.9	33.1
July-2014	50.9	40.2	76.8	47.2
August-2014	50.7	42.3	75.8	48.6
September-2014	50.6	40.1	76.1	47.0
October-2014	48.7	41.1	27.8	40.1
November-2014	p 40.6	p 39.0	p 27.6	p 37.5

p: provisional

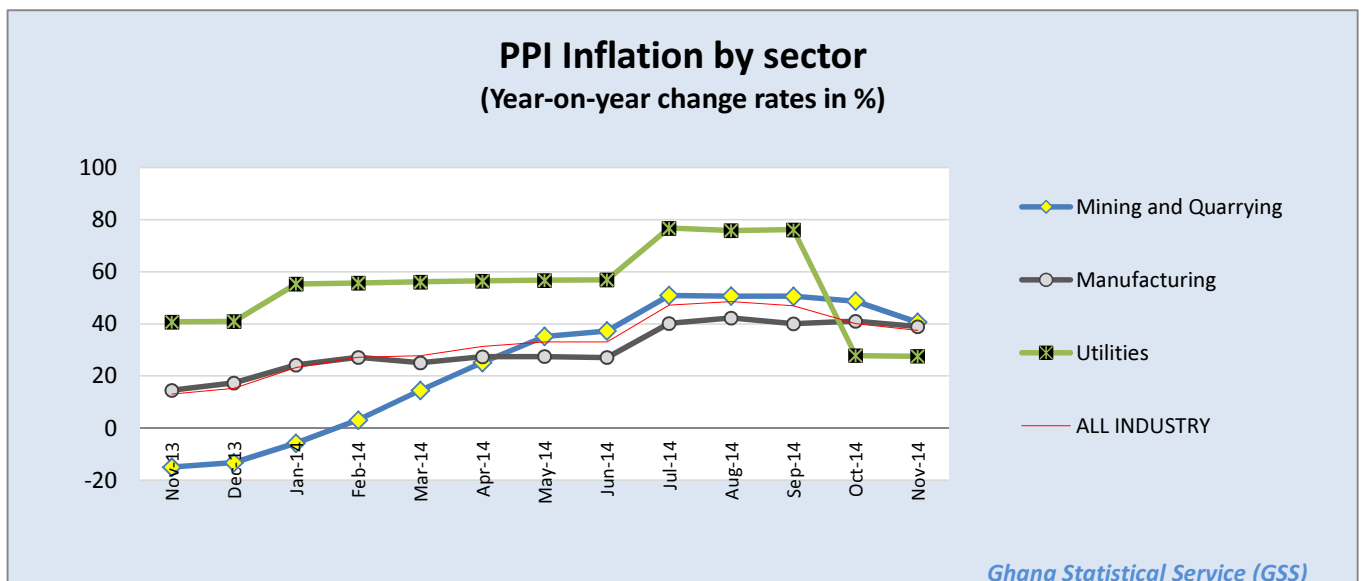


Table 4: Producer Price Index: Monthly Change Rates by Sector for November 2013 - November 2014 (%)

Year / Month	Mining and Quarrying	Manufacturing	Utilities	ALL INDUSTRY
<i>ISIC</i>	<i>C</i>	<i>D</i>	<i>E</i>	<i>C+D+E</i>
<i>weight</i>	13.97	69.75	16.28	100.00
2009 average	4.3	2.1	0.1	2.1
2010 average	1.9	0.4	6.0	1.4
2011 average	1.5	1.2	0.7	1.1
2012 average	2.1	1.5	0.1	1.3
November-2013	1.2	1.1	0.2	0.9
December-2013	-0.9	2.5	0.1	1.6
January-2014	9.4	5.9	10.2	7.1
February-2014	7.9	2.4	0.3	2.9
March-2014	8.5	2.6	0.3	3.1
April-2014	3.9	2.8	0.3	2.6
May-2014	3.4	1.1	0.2	1.3
June-2014	0.7	0.8	0.2	0.7
July-2014	4.7	10.7	12.6	10.0
August-2014	1.3	2.7	-0.5	1.9
September-2014	2.1	1.3	0.2	1.3
October-2014	-1.1	1.5	1.8	1.3
November-2014	p -4.3	p -0.4	p 0.0	p -1.0

p: provisional

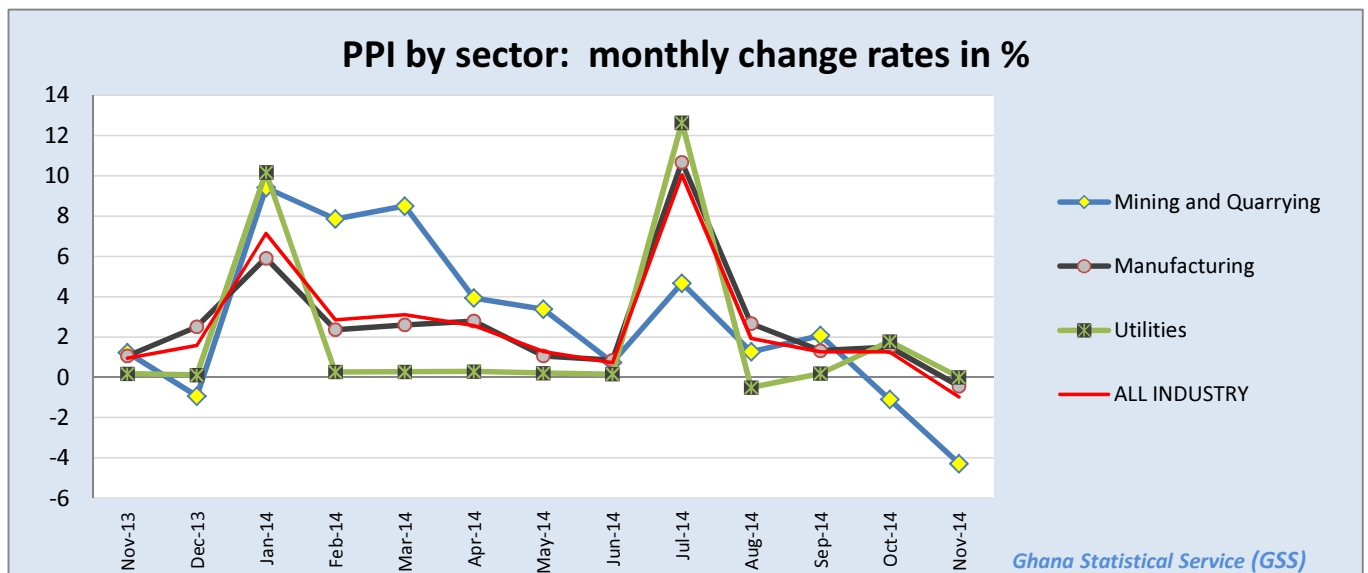


Table 5: Mining And Quarrying: Producer Price Index (Sept 2006=100) November 2013 - November 2014

Year / Month	Mining and Quarrying	Mining of metal ores	Mining of non-ferrous metal ores	Other mining and quarrying	Quarrying of stone, sand & clay	Mining and quarrying n.e.c.
ISIC	C	C13	C132	C14	C141	C142
weight	100.00	95.01	95.01	4.99	3.42	0.87
2009 average	282.2	292.3	292.3	118.9	114.4	138.3
2010 average	349.7	367.1	367.1	100.8	92.6	157.9
2011 average	467.0	494.9	494.9	107.7	99.1	156.3
2012 average	584.2	618.7	618.7	140.7	138.8	148.4
November-2013	537.0	565.7	565.7	146.6	143.0	161.8
December-2013	531.9	560.2	560.2	146.6	143.0	161.8
January-2014	582.0	615.4	615.4	144.6	140.6	161.8
February-2014	627.7	665.8	665.8	144.6	140.6	161.8
March-2014	681.0	724.8	724.8	144.6	140.6	161.8
April-2014	707.8	754.4	754.4	144.6	140.6	161.8
May-2014	731.7	781.0	781.0	144.6	140.6	161.8
June-2014	737.1	786.9	786.9	144.6	140.6	161.8
July-2014	771.6	825.2	825.2	144.6	140.6	161.8
August-2014	781.4	835.5	835.5	147.5	140.6	178.3
September-2014	797.6	853.5	853.5	147.5	140.6	178.3
October-2014	788.8	843.7	843.7	147.5	140.6	178.3
November-2014	p 755.0	p 806.2	p 806.2	p 147.5	p 140.6	p 178.3

p: provisional

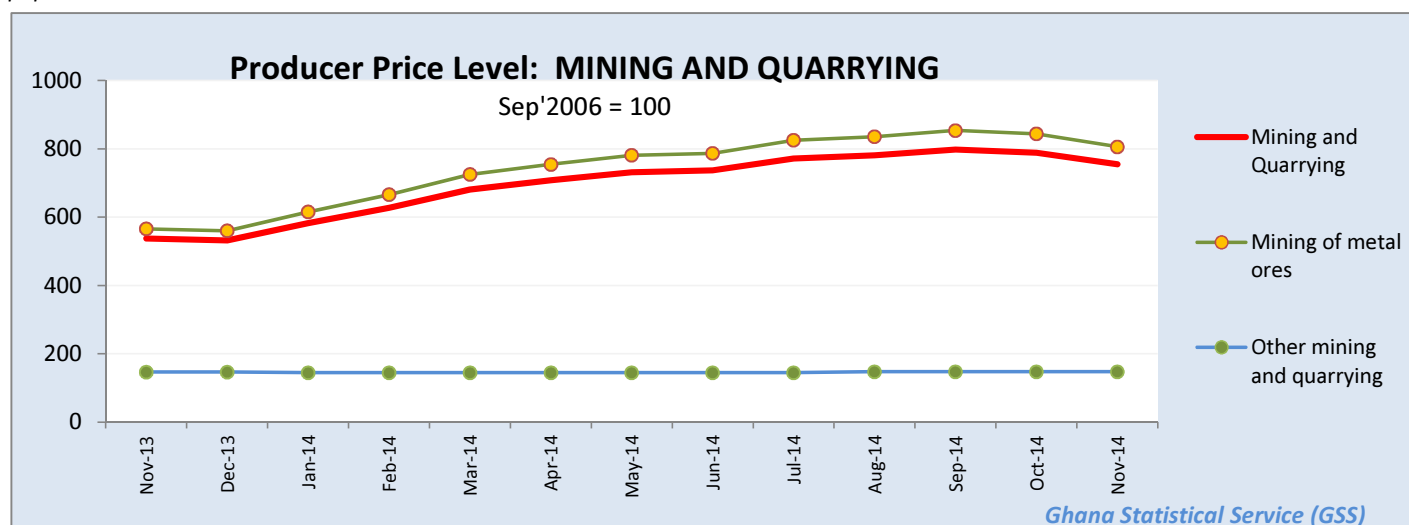


Table 6: Mining and Quarrying: Yearly Change Rates for November 2013 - November 2014(%)

Year / Month	Mining and Quarrying	Mining of metal ores	Mining of non-ferrous metal ores	Other mining and quarrying	Quarrying of stone, sand & clay	Mining and quarrying n.e.c.
ISIC	C	C13	C132	C14	C141	C142
weight	100.00	95.01	95.01	4.99	3.42	0.87
2009 average	47.3	49.2	49.2	2.3	8.8	-4.8
2010 average	24.3	26.1	26.1	-15.0	-18.8	14.4
2011 average	33.7	34.9	34.9	6.8	7.0	2.6
2012 average	25.5	25.4	25.4	30.7	40.1	-4.6
November-2013	-14.9	-15.6	-15.6	4.0	2.7	9.0
December-2013	-13.2	-13.8	-13.8	4.0	2.7	9.0
January-2014	-5.8	-6.0	-6.0	0.8	1.0	0.0
February-2014	3.1	3.2	3.2	0.8	1.0	0.0
March-2014	14.5	15.2	15.2	-1.3	-1.6	0.0
April-2014	25.2	26.4	26.4	-1.4	-1.7	0.0
May-2014	35.2	36.9	36.9	-1.4	-1.7	0.0
June-2014	37.3	39.1	39.1	-1.4	-1.7	0.0
July-2014	50.9	53.5	53.5	-1.4	-1.7	0.0
August-2014	50.7	53.2	53.2	0.6	-1.7	10.2
September-2014	50.6	53.1	53.1	0.6	-1.7	10.2
October-2014	48.7	51.1	51.1	0.6	-1.7	10.2
November-2014	p 40.6	p 42.5	p 42.5	p 0.6	-p 1.7	p 10.2

p: provisional

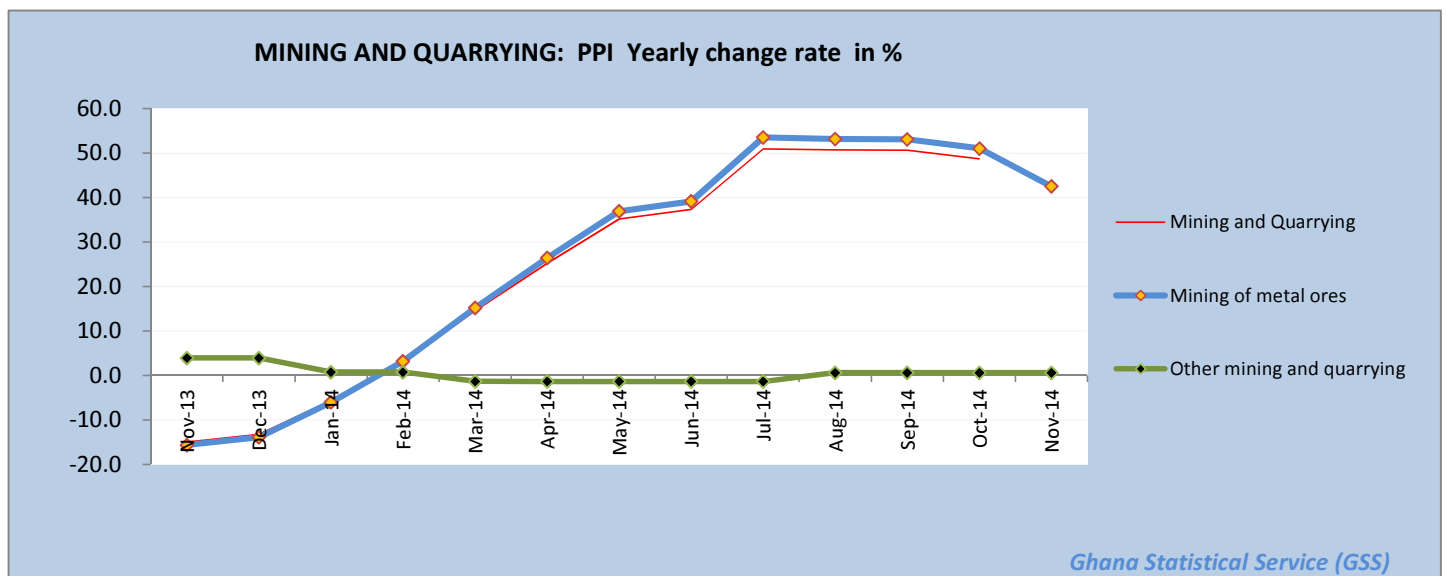


Table 7: Mining and Quarrying: Monthly Change Rates for November 2013 - November 2014 (%)

Year / Month	Mining and Quarrying	Mining of metal ores	Mining of non-ferrous metal ores	Other mining and quarrying	Quarrying of stone, sand & clay	Mining and quarrying n.e.c.
ISIC	C	C13	C132	C14	C141	C142
weight	100.00	95.01	95.01	4.99	3.42	0.87
2009 average	4.3	4.5	4.5	-0.9	-1.0	-0.1
2010 average	1.9	2.0	2.0	-0.5	-0.8	3.4
2011 average	1.5	1.6	1.6	0.5	0.6	-1.9
2012 average	2.1	2.1	2.1	2.4	3.1	0.0
November-2013	1.2	1.3	1.3	0.0	0.0	0.0
December-2013	-0.9	-1.0	-1.0	0.0	0.0	0.0
January-2014	9.4	9.9	9.9	-1.4	-1.7	0.0
February-2014	7.9	8.2	8.2	0.0	0.0	0.0
March-2014	8.5	8.9	8.9	0.0	0.0	0.0
April-2014	3.9	4.1	4.1	0.0	0.0	0.0
May-2014	3.4	3.5	3.5	0.0	0.0	0.0
June-2014	0.7	0.8	0.8	0.0	0.0	0.0
July-2014	4.7	4.9	4.9	0.0	0.0	0.0
August-2014	1.3	1.2	1.2	2.0	0.0	10.2
September-2014	2.1	2.2	2.2	0.0	0.0	0.0
October-2014	-1.1	-1.1	-1.1	0.0	0.0	0.0
November-2014	p -4.3	p -4.5	p -4.5	p 0.0	p 0.0	p 0.0

p: provisional

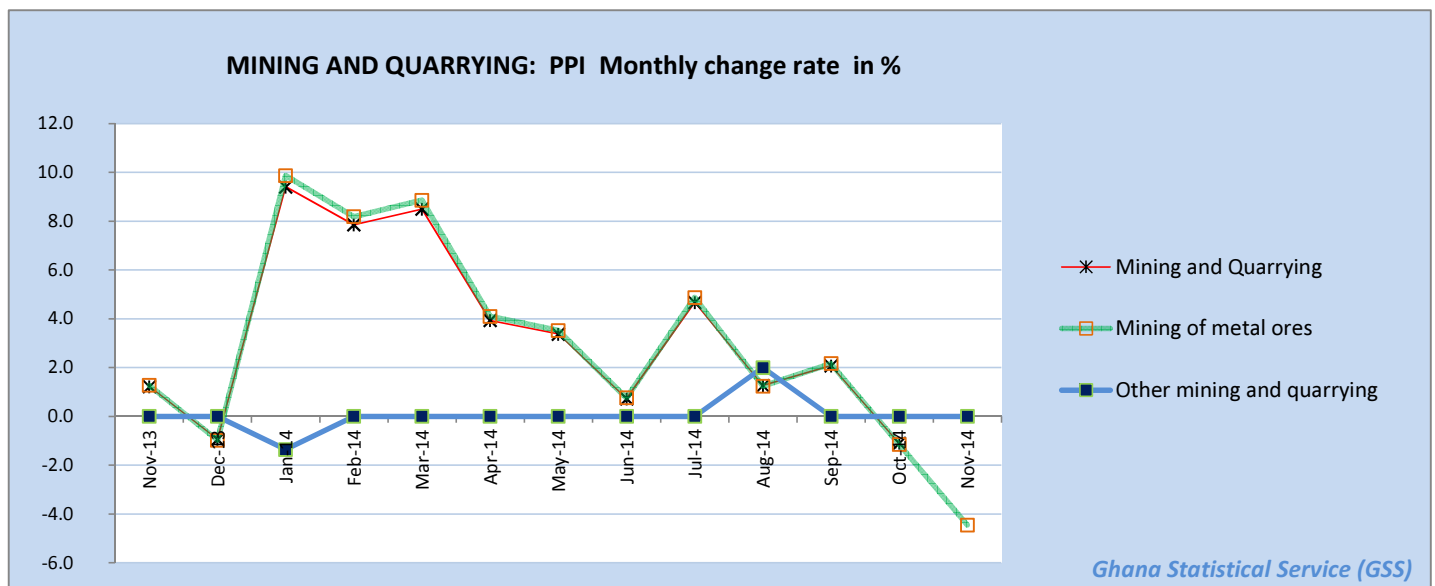


Table 8: Manufacturing Producer Price Index (Sept 2006=100) for November 2013 - November 2014

Year / Month	Manufacturing	Manufacture of food products and beverages	Production, processing, preservation of meat, fish, fruit, vegetables, oils and fats	Manufacture of dairy products	Manufacture of grain mill products, starch products, and prepared animal feeds	Manufacture of other food products	Manufacture of beverages	Manufacture of textiles	Spinning, weaving and finishing of textiles
<i>ISIC</i>	<i>D</i>	<i>D15</i>	<i>D151</i>	<i>D152</i>	<i>D153</i>	<i>D154</i>	<i>D155</i>	<i>D17</i>	<i>D171</i>
<i>weight</i>	100	25.64	4.60	4.31	4.66	4.80	7.27	4.27	4.28
2009 average	156.6	170.3	204.0	144.8	222.9	150.7	160.6	139.1	139.1
2010 average	176.3	198.1	199.6	173.2	232.8	184.7	211.9	150.5	150.5
2011 average	200.5	222.0	225.5	193.2	286.1	216.4	219.5	189.5	189.5
2012 average	237.7	260.3	285.3	216.3	329.3	221.7	278.2	265.5	265.5
November-2013	284.3	308.5	369.3	247.6	364.1	293.7	324.4	314.0	314.0
December-2013	291.4	324.4	383.9	286.4	364.1	298.3	324.4	313.4	313.4
January-2014	308.6	334.9	414.3	298.6	372.4	298.3	329.4	322.3	322.3
February-2014	315.9	341.1	438.4	298.6	380.6	314.1	329.4	322.3	322.3
March-2014	324.1	348.6	467.9	302.6	391.1	323.8	329.4	322.3	322.3
April-2014	333.2	352.5	492.9	302.6	391.1	333.5	329.4	322.3	322.3
May-2014	336.7	355.3	517.1	302.6	391.1	334.6	329.6	322.3	322.3
June-2014	339.6	357.5	527.2	302.6	391.1	344.7	329.6	323.6	323.6
July-2014	375.8	381.4	541.2	302.6	519.0	359.7	337.7	323.6	323.6
August-2014	385.8	381.8	556.4	302.6	519.0	257.9	382.8	359.9	359.9
September-2014	390.9	390.4	554.8	302.6	563.1	259.9	393.6	359.9	359.9
October-2014	396.8	402.3	534.0	354.0	563.1	250.9	393.6	359.9	359.9
November-2014	p 395.1	p 400.3	p 538.7	p 354.0	p 536.3	p 250.6	p 397.4	p 359.9	p 359.9

Table 8: Manufacturing Producer Price Index (Sept 2006=100) for November 2013 - November 2014

contd.

Year / Month	Tanning of leather; manu facture of luggage, etc	Manufacture of footwear	Manufacture of wood an of articles of straw etc.	Sawmilling and planing of wood	Manufacture of products of wood, cork, straw etc.	Manufacture of paper and paper products	Manufacture of paper and paper products	Publishing, printing and reproduction of rec. media	Publishing	Printing and service activities ...
ISIC	D19	D192	D20	D201	D202	D21	D210	D22	D221	D222
weight	0.12	0.12	9.03	4.94	4.10	0.62	0.62	1.14	0.40	0.74
2009 average	196.9	196.9	193.6	223.1	136.1	136.9	136.9	195.3	185.6	202.8
2010 average	218.0	218.0	183.2	193.3	157.2	153.0	153.0	232.0	243.2	225.9
2011 average	220.2	220.2	193.7	197.8	183.6	196.7	196.7	283.4	322.7	264.3
2012 average	240.7	240.7	205.4	207.4	200.0	199.3	199.3	369.9	423.5	344.7
November-2013	293.7	293.7	209.2	205.1	221.0	234.9	234.9	478.0	500.0	466.5
December-2013	302.3	302.3	211.0	205.1	228.6	235.0	235.0	478.0	500.0	466.5
January-2014	323.1	323.1	211.1	205.1	229.1	254.9	254.9	479.7	500.0	469.0
February-2014	323.1	323.1	211.3	205.1	229.8	254.5	254.5	489.3	500.0	483.5
March-2014	323.1	323.1	219.8	216.2	230.2	254.5	254.5	489.3	500.0	483.5
April-2014	313.3	313.3	210.9	205.1	228.1	254.5	254.5	489.8	500.0	484.4
May-2014	313.3	313.3	212.1	205.9	230.7	254.5	254.5	505.6	500.0	508.7
June-2014	371.3	371.3	213.0	205.9	234.4	276.5	276.5	512.4	500.0	519.3
July-2014	377.1	377.1	213.0	205.9	234.4	285.7	285.7	528.1	500.0	544.1
August-2014	377.1	377.1	213.0	205.9	234.6	285.7	285.7	528.1	500.0	544.1
September-2014	378.7	378.7	213.6	205.8	237.2	285.7	285.7	531.0	500.0	548.7
October-2014	377.4	377.4	226.2	221.8	237.6	285.7	285.7	531.0	500.0	548.7
November-2014	p 377.4	p 377.4	p 226.2	p 221.9	p 237.6	p 297.4	p 297.4	p 531.0	p 500.0	p 548.7

Table 9: Manufacturing: Yearly Change Rates for November 2013 - November 2014 (%)

Year / Month	Manufacturing	Manufacture of food products and beverages	Production, processing, preservation of meat, fish, fruit, vegetables, oils and fats	Manufacture of dairy products	Manufacture of grain mill products, starch products, and prepared animal feeds	Manufacture of other food products	Manufacture of beverages	Manufacture of textiles	Spinning, weaving and finishing of textiles
<i>ISIC</i>	<i>D</i>	<i>D15</i>	<i>D151</i>	<i>D152</i>	<i>D153</i>	<i>D154</i>	<i>D155</i>	<i>D17</i>	<i>D171</i>
<i>weight</i>	100	25.64	4.60	4.31	4.66	4.80	7.27	4.27	4.28
2009 average	12.7	21.1	24.1	17.9	8.4	11.0	31.5	18.0	18.0
2010 average	13.3	16.7	-0.9	20.3	4.5	22.9	33.0	8.4	8.4
2011 average	13.7	12.1	13.4	11.6	22.9	17.7	3.8	25.9	25.9
2012 average	18.5	17.1	26.9	12.0	15.4	3.0	26.5	39.9	39.9
November-2013	14.5	9.7	31.1	3.9	5.8	19.0	4.3	7.6	7.6
December-2013	17.4	15.3	38.3	20.1	5.8	18.0	4.3	7.4	7.4
January-2014	24.2	18.9	48.0	25.2	8.2	18.1	5.9	10.5	10.5
February-2014	27.2	21.1	53.4	25.2	11.6	26.5	5.9	10.5	10.5
March-2014	25.1	22.1	59.9	22.2	16.7	30.7	4.9	6.5	6.5
April-2014	27.4	22.9	69.2	22.2	16.7	28.8	4.9	6.5	6.5
May-2014	27.5	23.3	76.1	22.2	16.7	25.0	4.9	6.5	6.5
June-2014	27.1	23.8	76.4	22.2	16.7	26.5	5.9	6.9	6.9
July-2014	40.2	32.0	79.8	22.2	54.8	33.2	8.3	6.9	6.9
August-2014	42.3	32.1	86.2	22.2	54.8	-5.5	22.8	18.9	18.9
September-2014	40.1	31.3	59.4	22.2	68.0	-9.0	26.2	14.6	14.6
October-2014	41.1	31.5	49.8	43.0	54.7	-12.3	21.3	14.6	14.6
November-2014	p 39.0	p 29.7	p 45.9	p 43.0	p 47.3	-p 14.7	p 22.5	p 14.6	p 14.6

Table 9: Manufacturing Producer Price Index Yearly Change Rates for November 2013 - November 2014 (%)

contd.

Year / Month	Tanning of leather; manufacture of luggage, etc	Manufacture of footwear	Manufacture of wood and of articles of straw etc.	Sawmilling and planing of wood	Manufacture of products of wood, cork, straw etc.	Manufacture of paper and paper products	Manufacture of paper and paper products	Publishing, printing and reproduction of rec. media	Publishing	Printing and service activities ...
<i>ISIC</i>	D19	<i>D192</i>	D20	<i>D201</i>	<i>D202</i>	D21	<i>D210</i>	D22	<i>D221</i>	<i>D222</i>
<i>weight</i>	0.12	<i>0.12</i>	9.03	<i>4.94</i>	<i>4.10</i>	0.62	<i>0.62</i>	1.14	<i>0.40</i>	<i>0.74</i>
2009 average	35.9	35.9	45.1	59.0	18.9	10.6	10.6	69.2	37.6	93.7
2010 average	10.8	10.8	-5.2	-13.2	15.9	11.8	11.8	22.0	34.6	14.8
2011 average	1.1	1.1	5.8	2.5	16.9	28.9	28.9	22.2	32.7	17.0
2012 average	9.6	9.6	6.1	4.9	9.0	1.4	1.4	30.4	31.6	30.4
November-2013	10.2	10.2	1.6	-0.2	6.9	15.8	15.8	15.1	-1.9	25.6
December-2013	13.4	13.4	2.5	-0.2	10.6	15.4	15.4	15.1	-1.9	25.6
January-2014	19.7	19.7	2.1	-0.2	8.8	25.2	25.2	15.5	-1.9	26.3
February-2014	23.7	23.7	2.4	-0.2	10.2	25.0	25.0	17.8	-1.9	30.2
March-2014	19.0	19.0	5.9	5.1	8.3	16.4	16.4	13.3	-1.9	22.5
April-2014	14.1	14.1	1.5	-0.4	7.3	13.5	13.5	13.4	-1.9	22.7
May-2014	14.6	14.6	2.1	0.4	7.1	13.5	13.5	17.1	-1.9	28.9
June-2014	33.5	33.5	2.3	0.4	8.0	14.7	14.7	18.7	-1.9	31.6
July-2014	35.6	35.6	2.2	0.4	7.7	18.5	18.5	21.2	-4.4	37.9
August-2014	35.6	35.6	2.2	0.4	7.6	18.5	18.5	21.2	-4.4	37.9
September-2014	32.7	32.7	2.4	0.3	8.6	21.8	21.8	19.2	-4.4	p 34.5
October-2014	32.2	32.2	8.4	8.2	8.4	21.7	21.7	11.1	0.0	p 17.6
November-2014	p 28.5	p 28.5	p 8.1	p 8.2	p 7.5	p 26.6	p 26.6	p 11.1	p 0.0	p 17.6

Table 10: Manufacturing: Monthly Change Rates for November 2013 - November 2014 (%)

Year / Month	Manufacturing	Manufacture of food products and beverages	Production, processing, preservation of meat, fish, fruit, vegetables, oils and fats	Manufacture of dairy products	Manufacture of grain mill products, starch products, and prepared animal feeds	Manufacture of other food products	Manufacture of beverages	Manufacture of textiles	Spinning, weaving and finishing of textiles	
	<i>ISIC</i>	<i>D</i>	<i>D15</i>	<i>D151</i>	<i>D152</i>	<i>D153</i>	<i>D154</i>	<i>D155</i>	<i>D17</i>	<i>D171</i>
	<i>weight</i>	100	25.64	4.60	4.31	4.66	4.80	7.27	4.27	4.28
2009 average	2.1	1.7	1.7	2.6	-0.8	1.3	2.3	1.6	1.6	
2010 average	0.4	0.8	-0.1	0.7	0.6	1.9	1.6	1.0	1.0	
2011 average	1.2	1.1	1.5	0.8	2.3	-0.8	1.5	1.9	1.9	
2012 average	1.5	1.5	0.9	1.5	1.0	2.3	2.0	3.0	3.0	
November-2013	1.1	0.8	3.6	0.0	0.0	2.7	0.0	0.0	0.0	
December-2013	2.5	5.1	3.9	15.6	0.0	1.6	0.0	-0.2	-0.2	
January-2014	5.9	3.2	7.9	4.3	2.3	0.0	1.5	2.9	2.9	
February-2014	2.4	1.8	5.8	0.0	2.2	5.3	0.0	0.0	0.0	
March-2014	2.6	2.2	6.7	1.4	2.8	3.1	0.0	0.0	0.0	
April-2014	2.8	1.1	5.4	0.0	0.0	3.0	0.0	0.0	0.0	
May-2014	1.1	0.8	4.9	0.0	0.0	0.3	0.0	0.0	0.0	
June-2014	0.8	0.6	2.0	0.0	0.0	3.0	0.0	0.4	0.4	
July-2014	10.7	6.7	2.7	0.0	32.7	4.3	2.5	0.0	0.0	
August-2014	2.7	0.1	2.8	0.0	0.0	-28.3	13.3	11.2	11.2	
September-2014	1.3	2.2	-0.3	0.0	8.5	0.8	2.8	0.0	0.0	
October-2014	1.5	3.1	-3.7	17.0	0.0	-3.5	0.0	0.0	0.0	
November-2014	-p 0.4	-p 0.5	p 0.9	p 0.0	-p 4.8	-p 0.1	p 1.0	p 0.0	p 0.0	

Table 10: Manufacturing: Monthly Change Rates for November 2013 - November 2014 (%)

contd.

Year / Month	Tanning of leather; manu facture of luggage, etc	Manufacture of footwear	Manufacture of wood an of articles of straw etc.	Sawmilling and planing of wood	Manufacture of products of wood, cork, straw etc.	Manufacture of paper and paper products	Manufacture of paper and paper products	Publishing, printing and reproduction of rec. media	Publishing	Printing and service activities ...
<i>ISIC</i>	<i>D19</i>	<i>D192</i>	<i>D20</i>	<i>D201</i>	<i>D202</i>	<i>D21</i>	<i>D210</i>	<i>D22</i>	<i>D221</i>	<i>D222</i>
<i>weight</i>	0.12	0.12	9.03	4.94	4.10	0.62	0.62	1.14	0.40	0.74
2009 average	0.2	0.2	-0.9	-0.7	2.2	0.1	0.1	7.4	3.8	10.1
2010 average	1.1	1.1	-0.1	-0.8	0.8	1.7	1.7	-0.5	0.0	-0.9
2011 average	0.5	0.5	0.6	0.3	1.4	1.5	1.5	2.1	3.0	1.7
2012 average	1.1	1.1	0.4	0.3	0.5	0.2	0.2	2.7	4.1	2.2
November-2013	2.9	2.9	0.2	0.0	0.9	0.1	0.1	0.0	0.0	0.0
December-2013	2.9	2.9	0.9	0.0	3.4	0.1	0.1	0.0	0.0	0.0
January-2014	6.9	6.9	0.1	0.0	0.2	8.5	8.5	0.4	0.0	0.6
February-2014	0.0	0.0	0.1	0.0	0.3	-0.1	-0.1	2.0	0.0	3.1
March-2014	0.0	0.0	4.0	5.4	0.2	0.0	0.0	0.0	0.0	0.0
April-2014	-3.0	-3.0	-4.0	-5.1	-0.9	0.0	0.0	0.1	0.0	0.2
May-2014	0.0	0.0	0.6	0.4	1.1	0.0	0.0	3.2	0.0	5.0
June-2014	18.5	18.5	0.4	0.0	1.6	8.6	8.6	1.3	0.0	2.1
July-2014	1.6	1.6	0.0	0.0	0.0	3.3	3.3	3.1	0.0	4.8
August-2014	0.0	0.0	0.0	0.0	0.1	0.0	0.0	0.0	0.0	0.0
September-2014	0.4	0.4	0.2	-0.1	1.1	0.0	0.0	0.6	0.0	0.9
October-2014	-0.4	-0.4	5.9	7.8	0.2	0.0	0.0	0.0	0.0	0.0
November-2014	p 0.0	p 0.0	p 0.0	p 0.0	p 0.0	p 4.1	p 4.1	p 0.0	p 0.0	p 0.0

Table 11: Utilities: Producer Price Index (Sept 2006=100) for November 2013 - November 2014

Year / Month	Electricity and water supply (Utilities)	Electricity supply	Production, transmission and distribution of electricity	Water supply	Collection, purification and distribution of water
<i>ISIC</i>	<i>E</i>	<i>E40</i>	<i>E401</i>	<i>E41</i>	<i>E410</i>
<i>weight</i>	100.00	93.25	93.25	6.75	6.75
2009 average	159.4	157.2	157.2	193.0	193.0
2010 average	226.0	227.6	227.6	208.6	208.6
2011 average	281.3	285.8	285.8	225.1	225.1
2012 average	301.8	306.8	306.8	238.6	238.6
November-2013	426.8	431.7	431.7	362.7	362.7
December-2013	427.3	432.3	432.3	362.7	362.7
January-2014	470.9	477.4	477.4	387.3	361.0
February-2014	472.1	478.7	478.7	387.3	360.1
March-2014	473.4	480.1	480.1	387.3	387.3
April-2014	474.8	481.6	481.6	387.3	387.3
May-2014	475.8	482.7	482.7	387.3	387.3
June-2014	476.5	483.5	483.5	387.3	387.3
July-2014	536.8	547.0	547.0	411.0	411.0
August-2014	534.1	544.0	544.0	411.0	411.0
September-2014	535.1	545.1	545.1	411.0	411.0
October-2014	544.6	555.5	555.5	411.0	411.0
November-2014	p 544.6	p 555.5	p 555.5	p 411.0	p 411.0

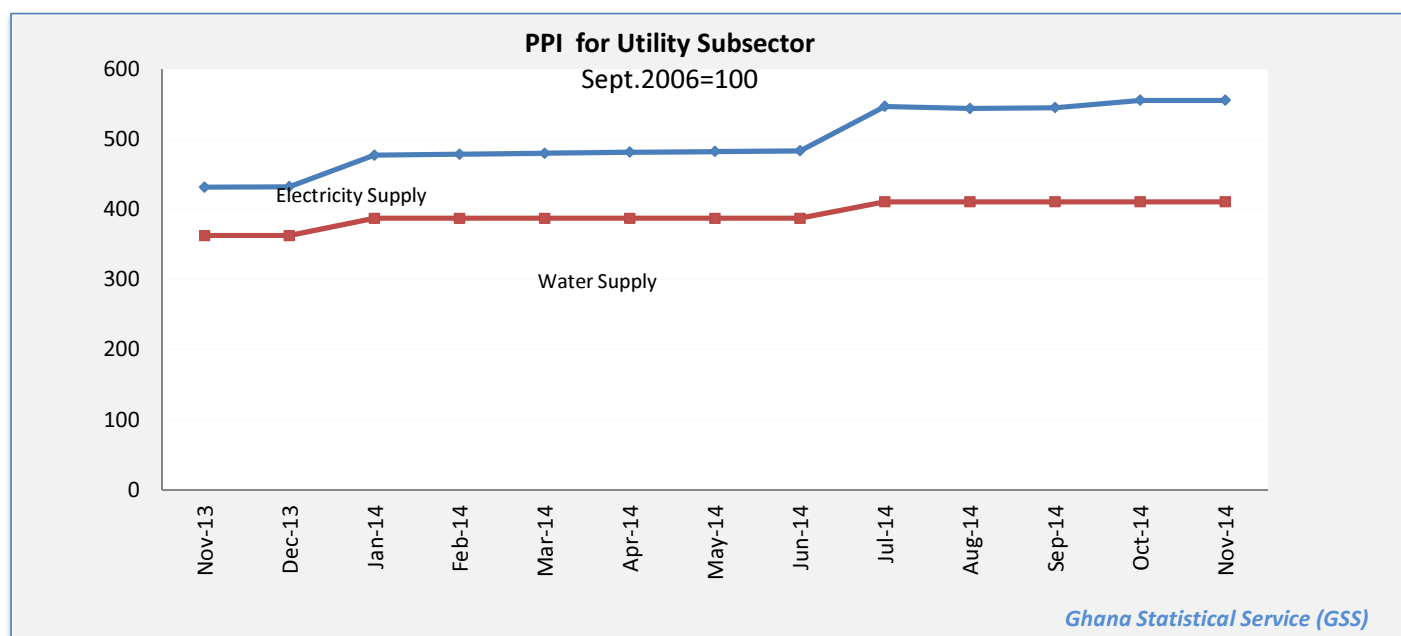


Table 12: Utilities: Yearly Change Rates for November 2013 - November 2014 (%)

Year / Month	Electricity and water supply (Utilities)	Electricity supply	Production, transmission and distribution of electricity	Water supply	Collection, purification and distribution of water
<i>ISIC</i>	<i>E</i>	<i>E40</i>	<i>E401</i>	<i>E41</i>	<i>E410</i>
<i>weight</i>	<i>100.00</i>	<i>93.25</i>	<i>93.25</i>	<i>6.75</i>	<i>6.75</i>
2009 average	1.4	1.6	1.6	0.0	0.0
2010 average	41.7	44.7	44.7	8.1	8.1
2011 average	32.7	34.8	34.8	8.2	8.2
2012 average	7.4	7.5	7.5	6.1	6.1
November-2013	40.8	40.1	40.1	52.0	52.0
December-2013	41.0	40.2	40.2	52.0	52.0
January-2014	55.3	54.8	54.8	62.3	51.3
February-2014	55.7	55.3	55.3	62.3	50.9
March-2014	56.1	55.7	55.7	62.3	62.3
April-2014	56.5	56.1	56.1	62.3	62.3
May-2014	56.8	56.4	56.4	62.3	62.3
June-2014	56.9	56.6	56.6	62.3	62.3
July-2014	76.8	77.1	77.1	72.2	72.2
August-2014	75.8	76.1	76.1	72.2	72.2
September-2014	76.1	76.4	76.4	72.2	72.2
October-2014	27.8	28.9	28.9	13.3	13.3
November-2014	p 27.6	p 28.7	p 28.7	p 13.3	p 13.3

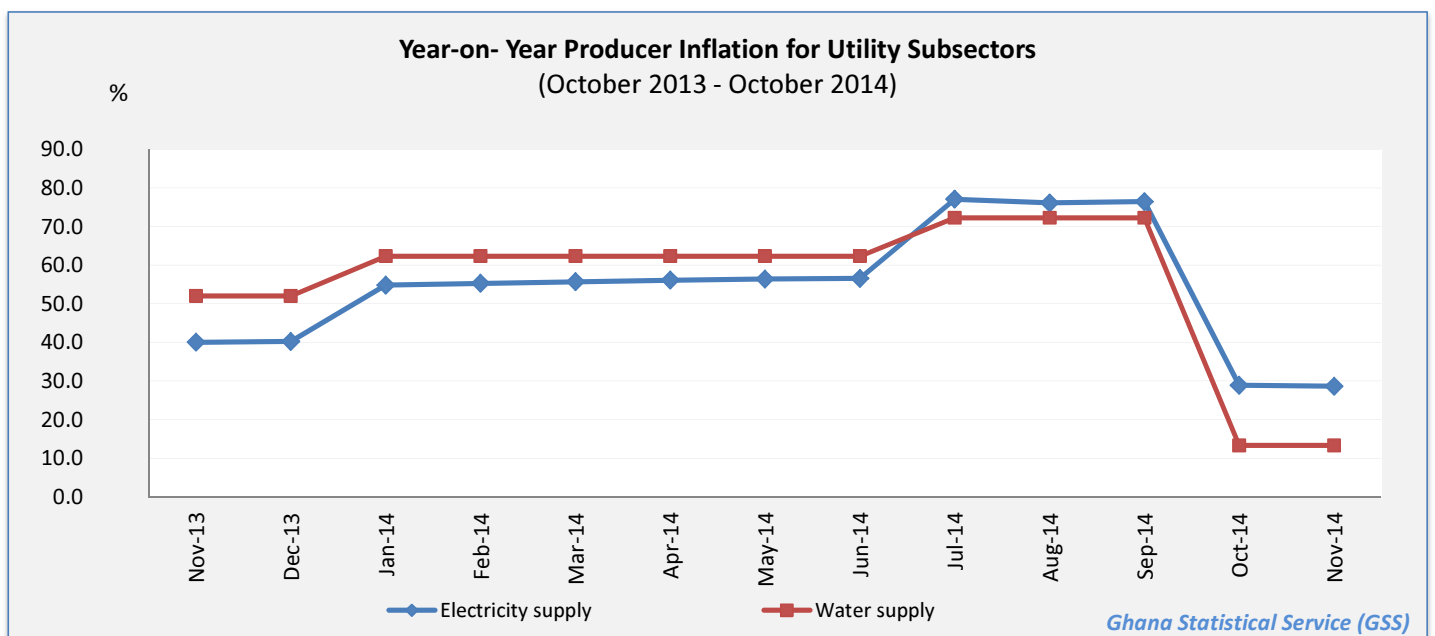


Table 13: Utilities: Monthly Change Rates for November 2013 - November 2014 (%)

Year / Month	Electricity and water supply (Utilities)	Electricity supply	Production, transmission and distribution of electricity	Water supply	Collection, purification and distribution of water
<i>ISIC</i>	<i>E</i>	<i>E40</i>	<i>E401</i>	<i>E41</i>	<i>E410</i>
<i>weight</i>	<i>100.00</i>	<i>93.25</i>	<i>93.25</i>	<i>6.75</i>	<i>6.75</i>
2009 average	0.1	0.1	0.1	0.0	0.0
2010 average	6.0	6.4	6.4	1.2	1.2
2011 average	0.7	0.8	0.8	0.7	0.7
2012 average	0.1	0.1	0.1	0.0	0.0
November-2013	0.2	0.2	0.2	0.0	0.0
December-2013	0.1	0.1	0.1	0.0	0.0
January-2014	10.2	10.4	10.4	6.8	-0.5
February-2014	0.3	0.3	0.3	0.0	-0.2
March-2014	0.3	0.3	0.3	0.0	7.6
April-2014	0.3	0.3	0.3	0.0	0.0
May-2014	0.2	0.2	0.2	0.0	0.0
June-2014	0.2	0.2	0.2	0.0	0.0
July-2014	12.6	13.1	13.1	6.1	6.1
August-2014	-0.5	-0.5	-0.5	0.0	0.0
September-2014	0.2	0.2	0.2	0.0	0.0
October-2014	1.8	1.9	1.9	0.0	0.0
November-2014	p 0.0	p 0.0	p 0.0	p 0.0	p 0.0

